

The Line Shaft

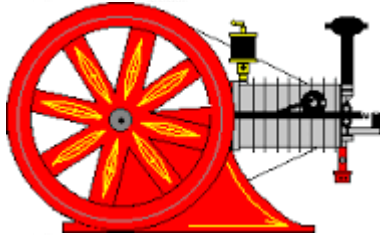
The Official Newsletter of the

NORTH JERSEY ANTIQUE ENGINE & MACHINE CLUB INC.

May 2024



President: Albert (Chuck) Klim
973/570-8328



Vice Pres: Richard Muys Sr.

570/903-5063

Treasurer: Linda Klim

973/948-0693

Secretary: Sandra Betts

973/600-3425

Founded on October 15th, 1979 by: Arthur Goble, Fred W. Westbrook, John Snook, Roy Bischoff & Lewis Quince

President, Chuck Klim, called the April 9th meeting to order, followed by the Pledge of Allegiance to the flag. No club meeting minutes were read as there had been no meetings since the November 2023 meeting.

Linda Klim reported the general bank account and raffle account balances. Notification was received from the insurance company about their NEW payment policy and Linda reviewed the other bills to be paid. The annual report was filed at the beginning of the year. The 990NE postcard was completed for taxes. The application for raffles was filed and a discussion followed regarding items to be raffled this year. A vote was made to continue the tractor & quilt raffles but discontinue the American doll. The ticket price will remain at \$3.00. Last year's raffle was very successful clearing \$500.00 on each item. Linda also talked of purchasing "in bulk" for more reasonable pricing. She has gotten hat emblems that are in the process of being sewn on. The hats will sell for \$15.00 each.

Renovations to the interior and exterior of the SHED were discussed. Linda spoke with the Club's accountant & he felt we need to put money back into the building...as a nonprofit organization this should be done. Remodeling the kitchen with a new sink, refrigerator, cabinets, electrical outlets, area for printer, places to hang clothing and much more was discussed. The Treasurer's report was approval by Brian Kardos & seconded by Andy Mackey.

The next item discussed was servicing and repairing our engines before the STATE FAIR. The OIL CITY/SOUTH PENN engine froze and requires some serious work and a wagon's left rear wheel is wobbling and needs repair. Also, the wagons are looking shoddy and need to be stained to look good. The next parade is the *Branchville Memorial Day* on May 27th and *Montague Day* is on June 29th; who would like us to bring our peanut machine and sell peanuts.

Changing the monthly meeting day was discussed. Not as many people are turning out for Tuesday evenings, so perhaps another day might accommodate others. No decision has been reached regarding the day, however the meeting will now be on the 1st Tuesday of each month rather than the second Tuesday, until further notice.

Linda spoke about the Club By-Laws. A copy of the current By-Laws was distributed to the attending members. Changes in content/wording should be discussed and made. A meeting of officers -directors was recently held in which the By-Laws & other items were discussed, but no changes made. New members should receive a revised By-Laws copy when they join. Dues are to be received no later than April 1st each year for a member to be in good standing.

A suggestion was made to post a list of projects needing to be completed this season. This way we can organize dates & times and members can plan ahead to volunteer help.

**DUES ARE
DUE
2024
\$25.00**

A motion was made to adjourn the meeting by Steve Boutillette and seconded by Brian Kardos.

Our next meeting will be on Tuesday May 7th at 7 PM in the Shed!

Our Web Address: njaemc.org

67 Branchville Lawson Rd., Newton NJ 07860

Where did the name TRACTOR come from?

The word TRACTOR was taken from the Latin term; TRAHERE...which means "to Pull"...in the late 18th century!

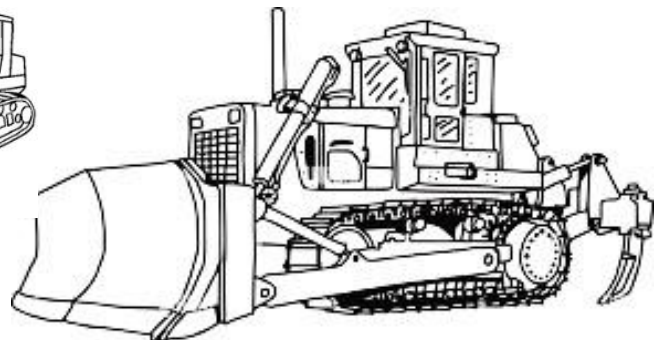


The most common use of the word TRACTOR is to describe a wheeled farm vehicle that mechanizes agricultural tasks using a variety of TOWED implements...and TOWED IS THE CRITICAL WORD. The vehicle delivers a high tractive effort (or torque) at slow speeds, but again...it must tow the plow, blade box, mower/cutter, rear blade, rake, ripper, rotary tiller, etc. to truly be called the one word TRACTOR. The tractor also "powers" some of these implements and some can be permanently fixed to the rear of the TRACTOR (think post hole drill, ripper, or salt spreader) for the machine to remain a simple TRACTOR. Also, the TRACTOR can be of the WHEELED or CRAWLER TRACTOR variety.



Front mounted attachments:, most notably the front-end loader with bucket or forks, turns the simple tractor into a TRACTOR LOADER . A simple TRACTOR with BOTH a front loader and backhoe attachment, causes the tractor to "lose" it's TRACTOR name completely, and it becomes a BACKHOE LOADER.

A front end loader attachment turns the CRAWLER TRACTOR into a CRAWLER LOADER. and a blade mounted to the front of a crawler tractor turns it into a BULL DOZER. Both have lost the word TRACTOR in their description!

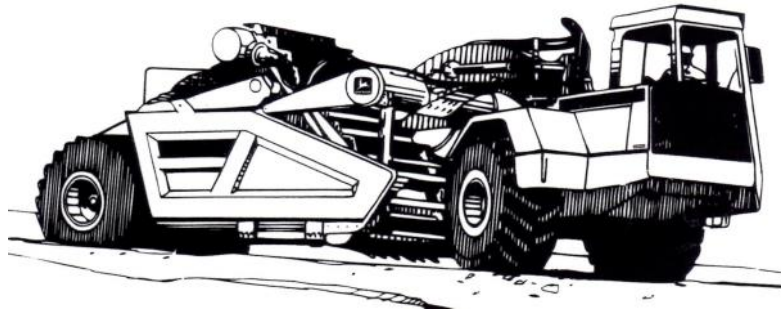


The word TRACTOR can be used to describe over-the-road vehicles and other construction and home-owner equipment also.

The most well-known would be the TRACTOR-TRAILER, with the “powered” front section being the Tractor and the rear section an articulating TOWED semi-trailer. Whether you call it a BIG-RIG, SEMI, 18-WHEELER or TRACTOR TRAILER, it moves between 65% and 70% of manufactured, imported and exported goods in the USA.



In the CONSTRUCTION EQUIPMENT area, we also have the WHEEL-TRACTOR-SCRAPER. (generally just called a SCRAPER)...a “self loading” (sometimes PUSH LOAD assisted, by a bull-dozer, or coupled together in a push-pull arrangement) OFF-ROAD tractor trailer. These are found on jobs where fill materials must be hauled long distances at relatively high rates of speed (think 40 MPH). As with the tractor-trailer, the powered front end is called the TRACTOR and the articulated TOWED rear half is called the BOWEL-SCRAPER. Note: there are models with “powered” rear wheels, which requires a smaller “traction” engine mounted on the rear of the scraper and coupled with a spongy torque converter, to “assist” loading .



GARDEN or LAWN TRACTOR

This small tractor is designed to supply tractive power to garden implements, is a home-owners handy-helper and is usually able to handle such tools as a plow, cultivator, rotary tiller, snow thrower, sweeper or blade. The tractor generally comes with a mower deck ATTACHMENT. And “attachment” is the key word, as many lawn mowers are called tractors by their manufacturer, but are NOT. A true tractor must be able to do a lot more things than just mow lawns and one of the key factors that separate a mower and tractor is how the mower is attached. The GARDEN or LAWN tractor’s mower deck must be an “attachment”, that allows the deck to be removed with pins or 4 to 6 bolts...while a Lawn Mower’s deck is generally integrated into the machine and usually unremovable as a component!



NJAE&MC—Upcoming Events:

NEXT Meeting:

TUESDAY May 7th 2024 at 7 Pm in the Shed!

FUTURE Club Events:

April 28th, PLOW DAY...WESSELHOF FARMS

58 Sunset Inn Rd. Lafayette, NJ...call Chuck for details!

May 27th, BRANCHVILLE MEMORIAL DAY PARADE

June 29th, MONTAGUE DAY

NON-CLUB EVENTS , that may be of interest to members!

Thank you...Andy Mackey

**May 17th-18th Jacktown -Blue Mountain Antique Gas & Steam Engine Show/Swap Meet
Bangor PA**

**May 11th Hudson Valley Old Time Power Auction
Hudson NY**



A CATERPILLAR LGP D8 CRAWLER TRACTOR

Towing fuel trailers to the NEW Williams Field Air Strip
1965 McMurdo Sound Antarctica

CART SPONSORS FOR 2024

Ideal Farm & Garden Center
Lafayette Auto Parts Supply
Montague Tool & Supply
Newton Auto Body
Solar Tire
The Hardware Store
Tire King
Wilson Coal & Supply

*Please patronize them and encourage your friends & family
to do the same!*



Telephone: 973/383-1717

**A large variety of Automotive Parts, Paint, Tools, Batteries,
Farm & Implement Parts, Bailing Twine, & Hydraulic Hoses!**

Monday-Friday: 7:00 A.M. - 5:00 P.M.

Saturday: 8:00 A.M. - 12:00 P.M.

Lafayette Auto Parts Supply

17 Morris Farm Road

Lafayette, NJ 07848

